

# Einwood® - Wood Plastic Composite Decking



COLOUR: Spotted Gum

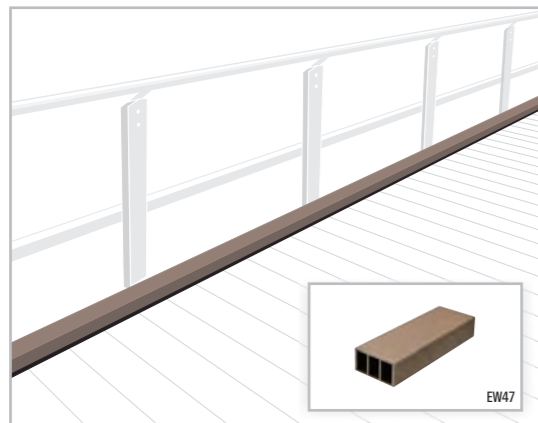
EW20

Due to its natural wood grain surface and patented technology Einwood® provides superior traction compared to other WPC products, even in wet conditions. The result of 15 years research, Einwood® cell board technology results in boards which are lighter, easier to transport and handle, more rigid, and easier to install than solid boards.

Thickness	30 mm
Width	145 mm
Length	2800 mm
Weight	3.15 kg/lm

## EINWOOD KICK RAIL (FINISHING OPTION)

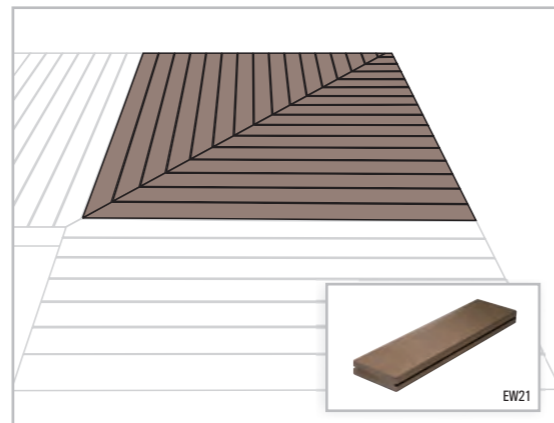
Landmark Products promotes a complementary Einwood® profile for kick rails, providing a hard wearing, complete WPC option solution on boardwalks, bridges and other pedestrian access structures with Einwood® decks.



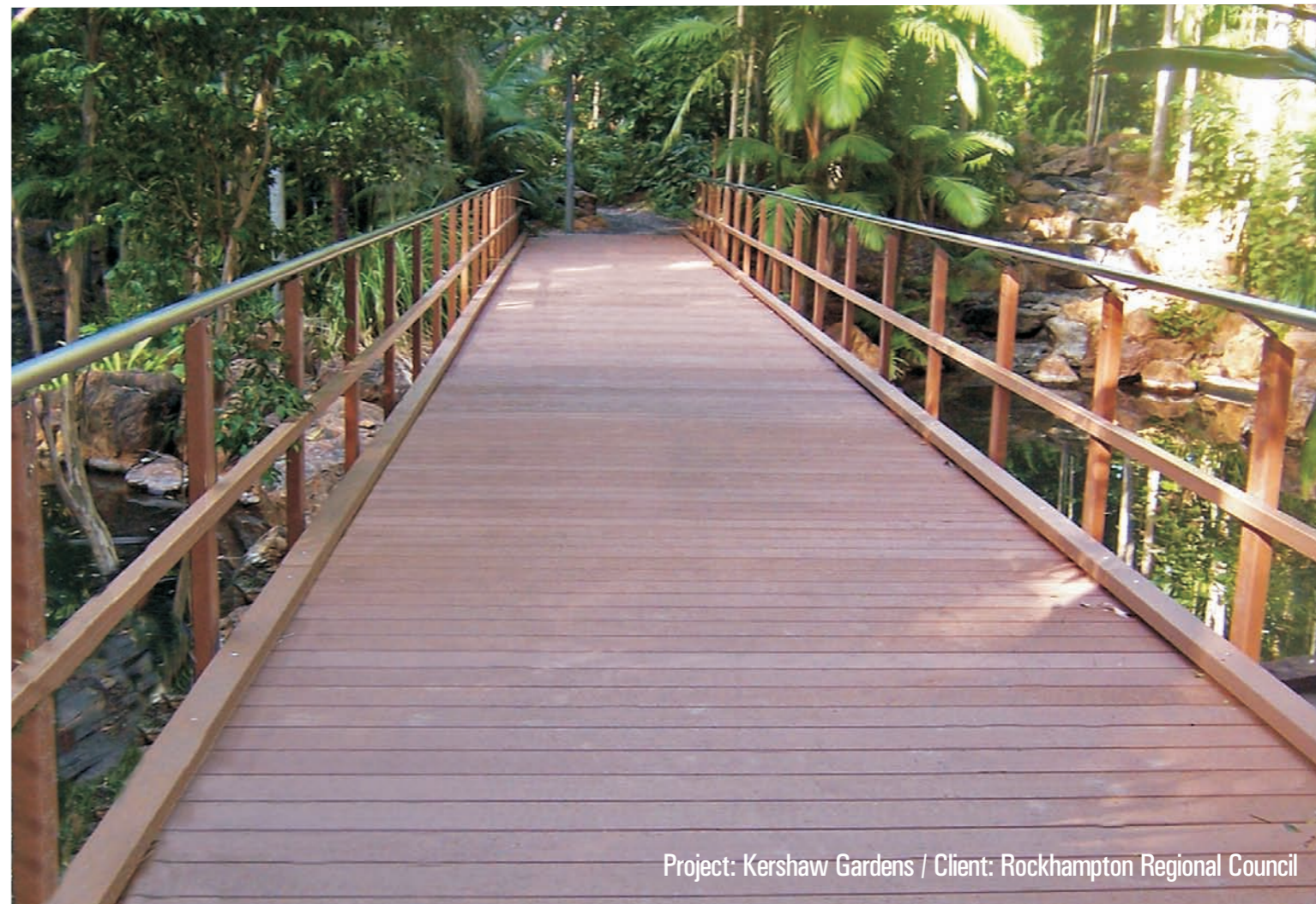
EW47

## EINWOOD SOLID EDGING (FINISHING OPTION)

Solid Einwood® decking boards should be used to accommodate truncations and curves, as well as for the first and last boards on any Einwood® deck. Contact your local Landmark Products representative for details.



EW21



Project: Kershaw Gardens / Client: Rockhampton Regional Council

# Einwood® WPC Decking



## The original Wood Plastic Composite

Einwood® WPC was invented 30 years ago as an eco-friendly alternative to timber. Wood plastic composites can offer superior performance to timber, particularly where hardwoods are usually

required. Einwood® is the world's leading WPC, manufactured exclusively in Japan, and offers comprehensive assurances for durability, appearance, technology and environmental sustainability.





# Environmentally Sustainable

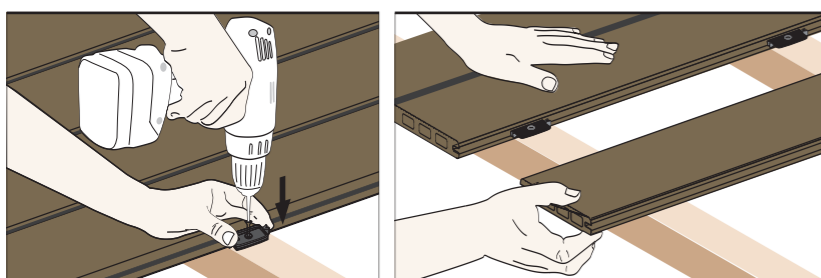
No tree is felled in the manufacture of Einwood®, nor any plastic incinerated. Einwood® WPC is manufactured from a mixture of recycled wood flour and recycled plastic (resins). It is also 100% recyclable and guaranteed free of solvents, glue, or other environmentally damaging additives. Even when incinerated, boards do not generate anything harmful to health. Einwood® WPC carries the prestigious Eco-Mark Label which takes into consideration the complete life cycle of recycled building materials - [www.zayaanco.com](http://www.zayaanco.com)



Label Eco Mark 09137002



# Easy to Install



Patented Cliplam® clips are supplied with all Einwood decking to allow for simple, accurate and rapid installation. The Cliplam® system is superior to conventional surface screw fixing. By eliminating holes through the deck and consequent penetration of water into the substructure reduces maintenance requirements and can significantly prolong the design life of the entire structure. It also provides for accurate, consistent gap spacing and expansion of the decking boards to produce a smooth, uniform and immaculately finished deck surface.

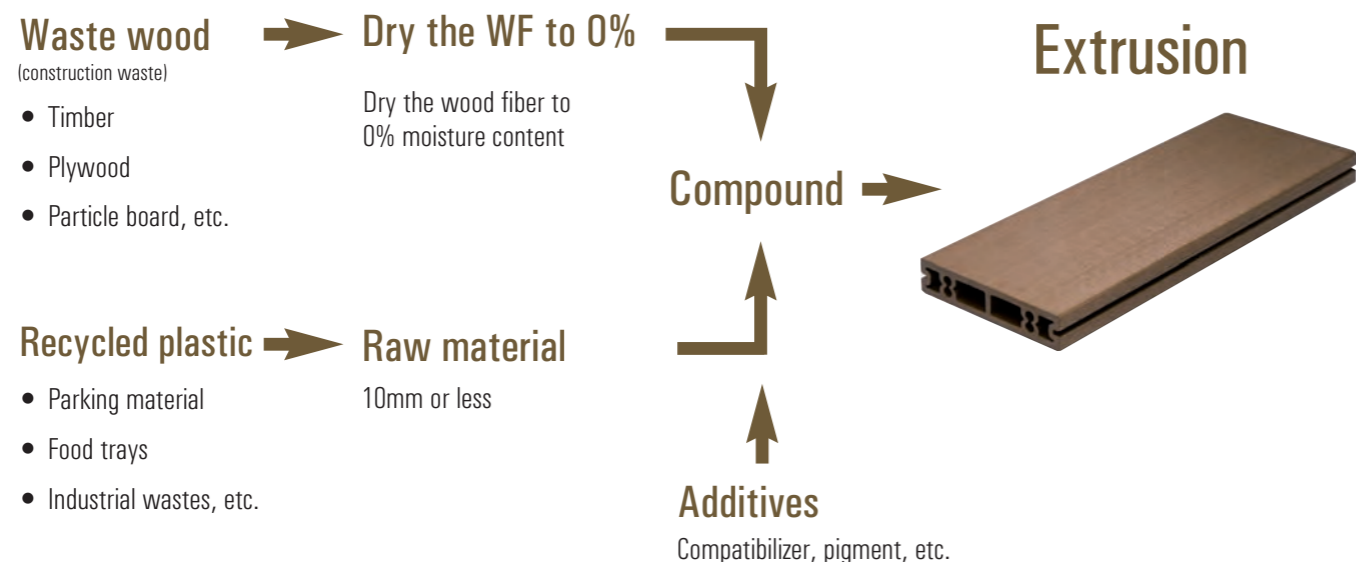


# Feels, looks and smells like timber

Many WPC products have a high content plastic surface which not only looks artificial but may compromise slip resistance. Due to its unique formulation EINWOOD® has the organic feel and look of natural timber without some of the disadvantages. Guaranteed free of knots or splinters,

with minimal fading, Einwood® decking provides a surface that not only feels good, but also creates a safer, more user friendly surface for both pedestrian and bicycle traffic.

## Process Flow of Manufacturing Einwood®



# Low Maintenance

Unlike most composites, Einwood® can also be sanded to restore the original grained appearance or remove surface marks and graffiti. Maintenance costs are dramatically reduced without the need for additional applications of UV protection, saturation coatings, varnish,

lacquer or other costly chemical products. Due to its impermeable nature, stains do not penetrate deep into the product fibres and Einwood® can be cleaned with soap and water or a high pressure hose. Einwood® is resistant to insects, fungi, rot, water penetration, and ultra-violet radiation.

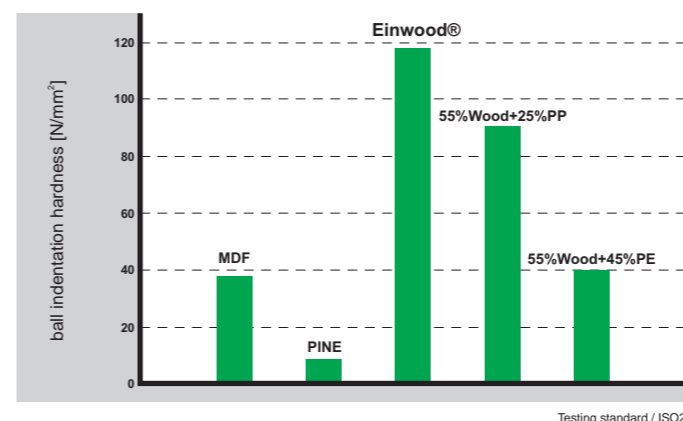
	Colour-fast in sunlight	Rot-proof, no treatment needed	No maintenance needed	Anti-slip	Easy and rapid laying	Hardwearing and natural	No treatment needed	Insect-repellent	Will not split
EINWOOD®	■ ■	■ ■	■ ■	■ ■	■ ■	■ ■	■ ■	■ ■	■ ■
TIMBER				■	■	■			
PLASTIC		■ ■	■ ■		■		■	■ ■	■

## Change over time as recorded by a sunshine weathering meter

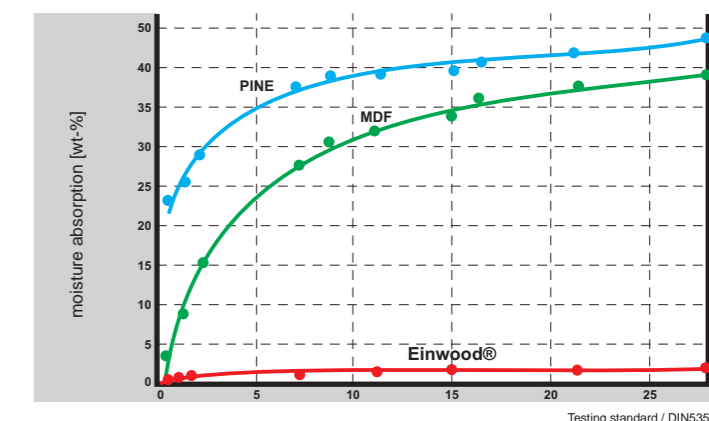


\* The sunshine weather test exposes the test sample to strong ultraviolet rays and water, creating a high humidity environment to facilitate observation of changes over time. A period of 500 hours is equivalent to approximately one year of aging, depending on the region and sunshine conditions.

## Ball indentation hardness of the Einwood® VS MDF, PINE

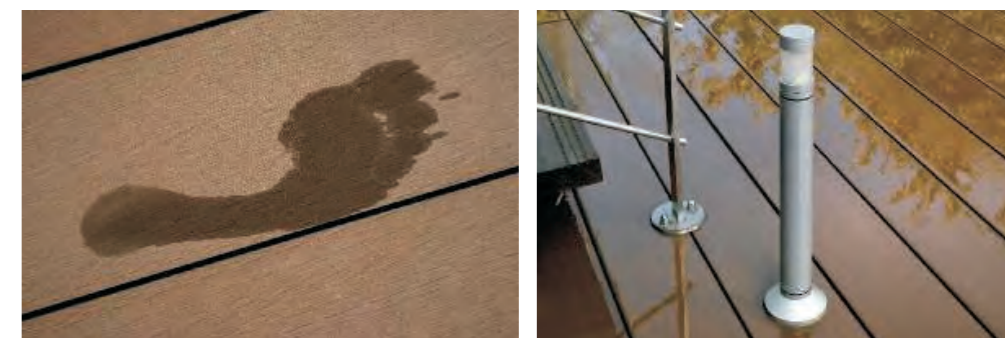


## Water absorption VS time for the Einwood® VS MDF, PINE



# Safe

**Excellent Slip Resistance** – Einwood® has been tested and classified as a Class X non-slip decking surface, superior to traditional decking materials such as hardwood. Due to the simple Cliplam® installation system it is also free of splinters and protruding screw heads. Einwood® does not sustain combustion and contains no adhesives, formaldehyde, or toxic by-products that can be released upon incineration or recycling.





# ZAYAANCO

Suite No. 704, Orange Tower,  
Next to National Paint Factory, P. O. Box  
72936, Sharjah, U.A.E.  
Hotline : +971 5555 6 4004  
Tel No. : +971 6 569 17 57  
info@zayaanco.com, www.zayaanco.com

Deck flooring Dubai I Waterproof WPC decking in Abu Dhabi I Swimming pool wood plastic composite decking in Sharjah I Decking contractors in Dubai I  
Wooden flooring suppliers Abu Dhabi I Anti-skid WPC stockist in Dubai I Timber decking specialist in Dubai I Bamboo decking installers in Dubai I Grooves wood  
plastic composite decking manufacturer in Dubai I Safety WPC decking stockiest in Sharjah I DIY decking tiles suppliers companies in Al Ain I Outdoor flooring  
traders UAE I Garden decking installers in Abu Dhabi I WPC outdoor furniture suppliers in Sharjah I WPC fencing contractors UAE I WPC decking board traders  
Abu Dhabi I Swimming pool decking specialist in Dubai I Flooring Adhesives in Dubai I Self leveling contractors in UAE I Wooden installation in Dubai I Flooring  
installer in Abu Dhabi I Wooden flooring contractors I Flooring suppliers in Dubai I Flooring solutions Dubai I Acoustic multi-layer flooring solutions Dubai I  
Educational acoustic Dubai I Antistatic flooring UAE I Commercial flooring Abu Dhabi I Contract flooring Dubai I